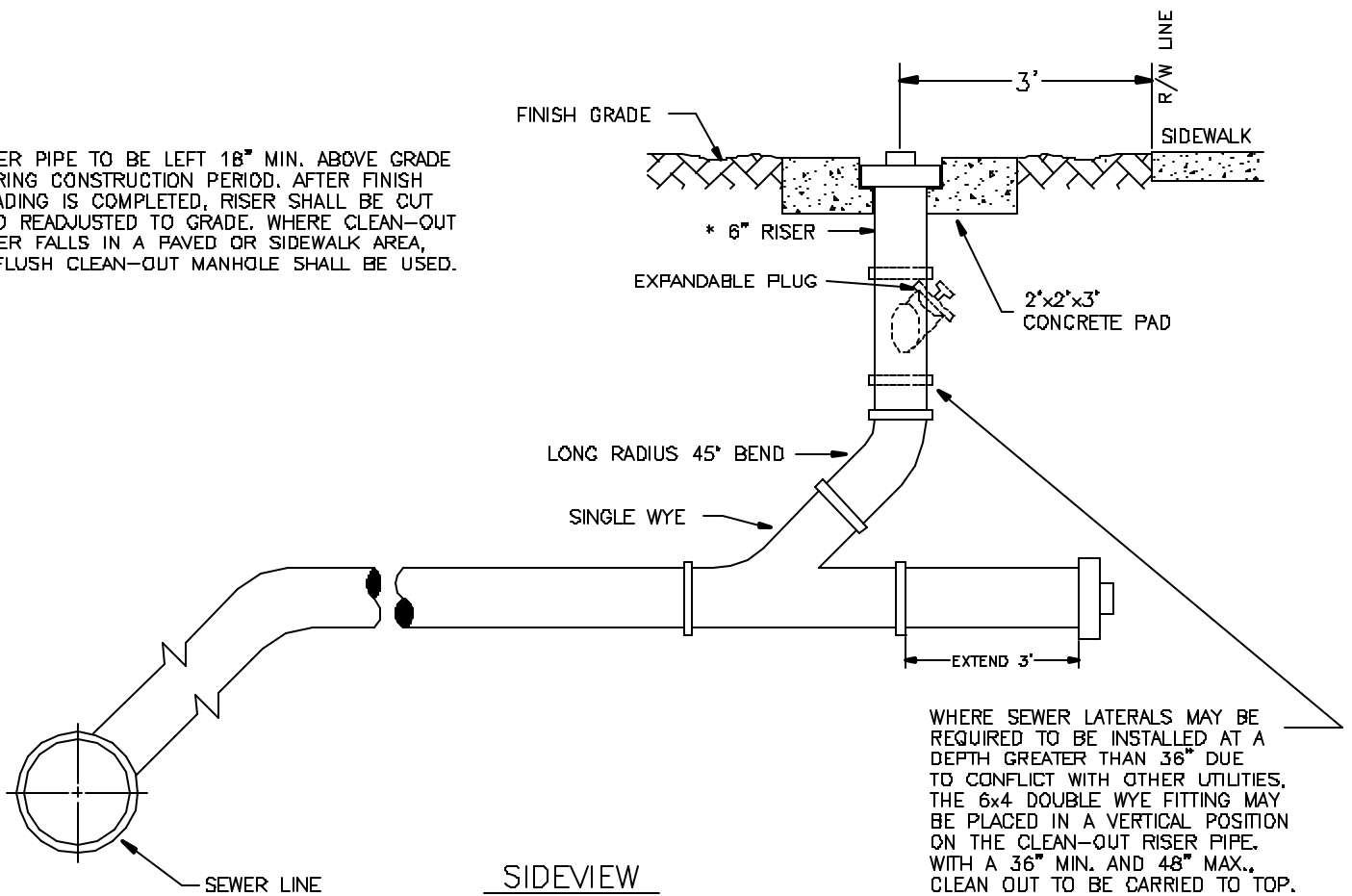


OVERVIEW

* RISER PIPE TO BE LEFT 18" MIN. ABOVE GRADE DURING CONSTRUCTION PERIOD. AFTER FINISH GRADING IS COMPLETED, RISER SHALL BE CUT AND READJUSTED TO GRADE. WHERE CLEAN-OUT RISER FALLS IN A PAVED OR SIDEWALK AREA, A FLUSH CLEAN-OUT MANHOLE SHALL BE USED.



SIDEVIEW

WHERE SEWER LATERALS MAY BE REQUIRED TO BE INSTALLED AT A DEPTH GREATER THAN 36" DUE TO CONFLICT WITH OTHER UTILITIES, THE 6x4 DOUBLE WYE FITTING MAY BE PLACED IN A VERTICAL POSITION ON THE CLEAN-OUT RISER PIPE. WITH A 36" MIN. AND 48" MAX., CLEAN OUT TO BE CARRIED TO TOP.

SINGLE SERVICE SANITARY SEWER

NOTE:

N.T.S.

EACH SERVICE OR DOUBLE WYE SERVICE SHALL HAVE A CLEAN-OUT BROUGHT TO THE PROPERTY LINE.