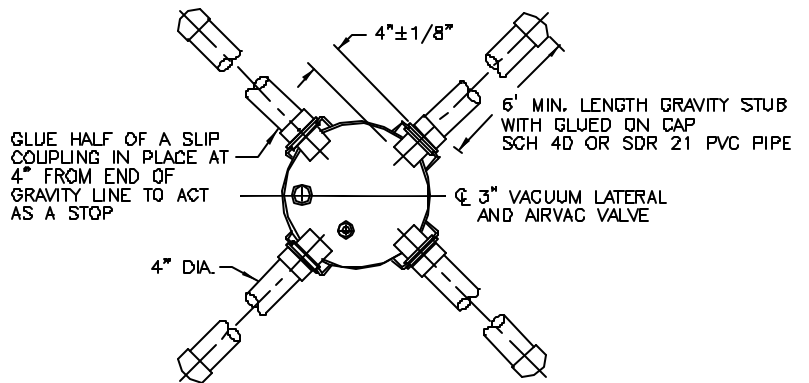


SECTION 'A'-'A'

NOTE: WHEN INSTALLING ANY PIPE THROUGH A GROMMET USE ONLY WATER OR MILD DETERGENT AS A LUBRICANT. NEVER USE PIPE JOINT GREASE



SECTION 'B'-'B'

SHOWING UP TO 4 GRAVITY CONNECTIONS TO SUMP

AIRVAC FIBERGLASS VALVE PIT

N.T.S.