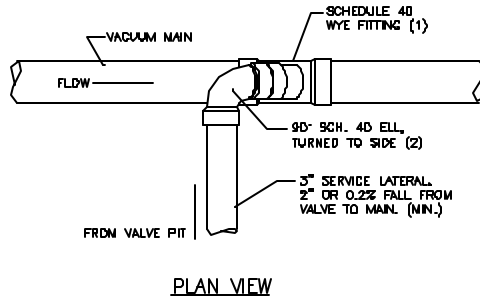


DIMENSIONS BASED ON SPEARS MANUFACTURING
 (1) 45 DEG WYE, SOCKET x SOCKET x SOCKET
 (2) 45 DEG ELL, SOCKET x SOCKET

WYE SIZE	A	B	C	D- INVERT
4 x 4 x 4	8 3/4"	3 5/16"	8.53"	0.71"
4 x 4 x 3	9 1/4"	3 1/16"	8.70"	0.73"
6 x 6 x 6	12 1/8"	5 9/16"	12.5"	1.04"
6 x 6 x 4	10"	3 5/16"	9.41"	0.78"
6 x 6 x 3	10 1/2"	3 1/16"	9.58"	0.80"
8 x 8 x 8	18 3/4"	6 13/16"	18.07"	1.52"
8 x 8 x 6	16 1/4"	5 9/16"	15.42"	1.30"
8 x 8 x 4	14 1/4"	3 5/16"	12.42"	1.05"
8 x 8 x 3	13"	3 1/16"	11.38"	0.98"
10 x 10 x 10	22 3/8"	8 19/32"	21.90"	1.89"
10 x 10 x 6	20 1/4"	6 13/16"	19.13"	1.61"
10 x 10 x 4	17 3/4"	5 9/16"	16.48"	1.42"
10 x 10 x 3	15 3/4"	3 5/16"	13.48"	1.18"
10 x 10 x 3	14 3/4"	3 1/16"	12.33"	1.08"

VACUUM BRANCH TO MAIN LINE CONNECTION

N.T.S.



DIMENSIONS BASED ON SPEARS MANUFACTURING
 (1) 45 DEG WYE, SOCKET x SOCKET x SOCKET
 (2) 90 DEG ELL, SOCKET x SOCKET

WYE SIZE	A	B	C	D- INVERT
4 x 4 x 3	9 1/4"	3 25/32"	9.32"	0.78"
6 x 6 x 3	10 1/2"	3 25/32"	10.21"	0.85"
8 x 8 x 3	13"	3 25/32"	11.86"	1.00"
10 x 10 x 3	14 3/8"	3 25/32"	12.84"	1.10"

VACUUM SERVICE LATERAL TO MAIN OR BRANCH CONNECTION

N.T.S.